

PROXIMA AE LED WATERPROOF BATTEN LUMINAIRES

PROXIMA AE LED ETANJ ARMATÜRLERİ



GENERAL INFORMATION

GENEL ÖZELLİKLER

Recommended installation height	4m to 8m
Önerilen Montaj Yüksekliği	4m ile 8m
CE mark	Yes
CE sertifikası	
ROHS compliant	Yes
ROHS uyumu	
CCT	5000°K (Standard)
Renk Sıcaklığı	
CRI	> 80+
Renk Geri Verim İndeksi	
Power	35 Watt
Güç	
Luminaire Light Output	4391 Lm
Armatür Işık Akısı	
Efficacy	117 Lm/W
Etkinlik Faktörü	
EI	0.10
Enerji Verimliliği İndeksi	
Energy Efficiency Class	A+
Enerji Verimliliği Sınıfı	
Testing standard	EN 60598-1
Test Standartları	EN 60598-2-13 EN 62262 EN 60529 IEC TR 62778 LM 79-08
Warranty	5 Years
Garanti	5 Yıl



Powered by

Samsung LED
Lifud LED Driver



OPTICAL INFORMATION

OPTİK ÖZELLİKLER

LED	Mid Power LED
LED Lifetime	60.000 Hours/Saat
LED Ömrü	
Beam Angles	130°
Optik	
LED colour	2700°K-3000°K-4000°K-5000°K-6500°K
Temperature	
Renk Sıcaklığı	5000°K
(Standart)	

MECHANICAL INFORMATION

MEKANİK BİLGİLER

Body	Aluminum Extrusion
Gövde	Alüminyum Ekstrüzyon
Dimensions (mm)	1200 x 53 x 67
Boyutlar(mm)	
IP	IP 65
Koruma Sınıfı	
Colour Options	WHITE RAL9016
Renk Seçeneği	

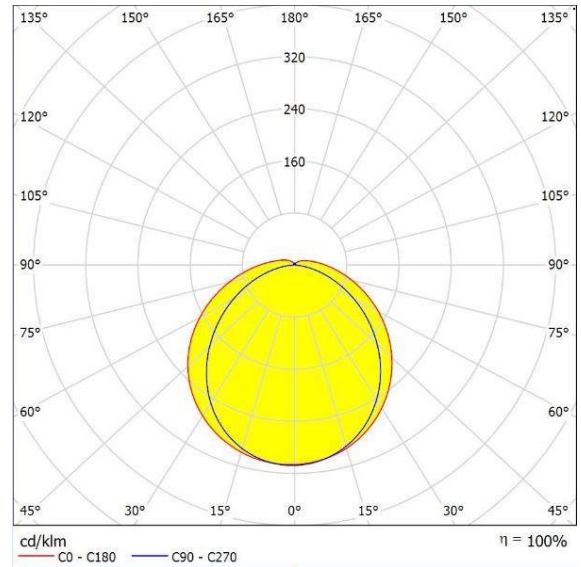
ELECTRICAL INFORMATION

ELEKTRİKSEL BİLGİLER

Input Voltage	185~265 VAC
Giriş Gerilimi (V)	
PF (Power Factor)	> 95
Güç Faktörü	
Dimmable Options	1-10V, TRIAC, DALI
Opsiyonlar	
Electromagnetic compatibility (EMC)	EN 55015:2013/A1:2015, EN 61000-3-2:2014, EN 61000-3-3:2013, EN61000-4-2:3,4,5,6,11, EN 61547:2009, EN62384, EN 62493:2015
Elektromanyetik Uyumluluk	

FIELDS OF APPLICATION

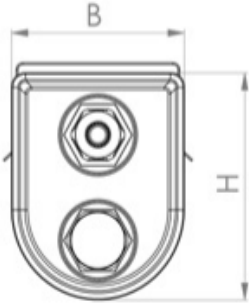
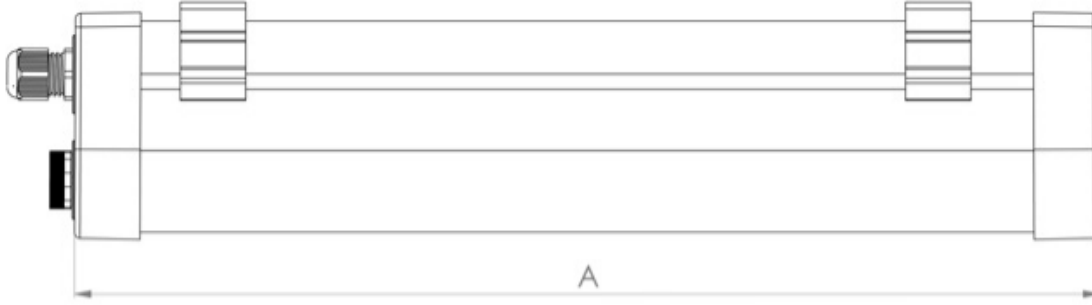
UYGULAMA ALANLARI



OTHER OPTIONS DİĞER OPSİYONLARI

Stock Code Stok Kodu	Product Name Ürün Adı	LED	LED Quantity Sayısı	Correlated Color Temperature (CCT) Renk Sıcaklığı	Color Rendering Index (CRI) Renkssel Geri Verim İndeksi	Power (W) Güç	Light Output (lm) Lümen	Beam Angle Işık Açısı	Efficacy (lm/W) Etkinlik Faktörü	Dimension (mm) Boyut
150.25.4659	PROXIMA AE LED WATERPROOF BATTEN 29W	LM281B+/RJ	96	5000 °K	80+	29	3249	130°	112	600x53x68
150.25.4660	PROXIMA AE LED WATERPROOF BATTEN 35W	LM281B+/RJ	96	5000 °K	80+	35	3848	130°	110	600x53x68
150.25.4661	PROXIMA AE LED WATERPROOF BATTEN 48W	LM281B+/RJ	96	5000 °K	80+	48	5017	130°	106	600x53x68
150.25.4662	PROXIMA AE LED WATERPROOF BATTEN 46W	LM281B+/RJ	192	5000 °K	80+	46	5217	130°	116	1200x53x68
150.25.4663	PROXIMA AE LED WATERPROOF BATTEN 54W	LM281B+/RJ	192	5000 °K	80+	54	6070	130°	114	1200x53x68

DIMENSIONS BOYUTLAR



Length (mm)

	A	B	H
STANDART	600	53	67
STANDART	1200	53	67
STANDART	1500	53	67

CERTIFICATES SERTİFİKALAR



LVD EMC CE



fotonik™

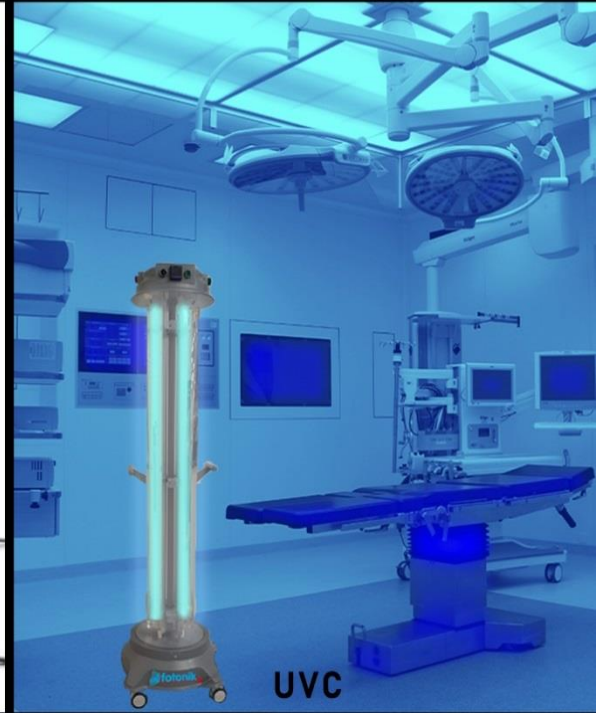
Creates Intelligent Photons



UVA



UVB



UVC



9001:2015



14001:2015



45001:2018



13485:2016



Ar-Ge/R&D: A. Veysel Bulv. ERU TGB 4. Bina, No: 67-3/41, M.Gazi/KAYSERİ

Fabrika/Factory: Anbar Mah. 2973. Sokak A2 Blok No:11/D, M.Gazi/KAYSERİ

+90 352 502 02 50

+90 555 090 12 38

İstanbul: +90 212 401 98 38
+90 542 532 47 16
istanbul@fotonik.com.tr

Ankara: +90 312 335 25 94
+90 530 868 35 59
ankara@fotonik.com.tr

İzmir: +90 232 570 01 18
+90 544 344 40 31
izmir@fotonik.com.tr

Bursa: +90 224 441 00 68
+90 533 442 64 44
bursa@fotonik.com.tr

Antalya: +90 352 502 02 50
+90 541 470 16 39
antalya@fotonik.com.tr



www.fotonik.com.tr