

## PC LENS FOR WINDOWS AND DOORS APPLICATIONS

### MATERIAL INFORMATION

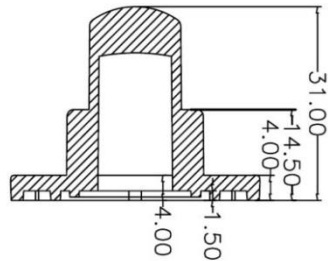
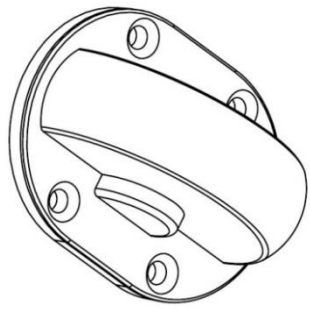
Product Type	Windows – Doors Lens
ROHS compliant	Yes
Product Material	PC
Colour	Clear
Warranty	5 Years

### TECHNICAL INFORMATION

Size (mm)	55 x 40 x 31
Fastening	Glue / Silicone Gasket

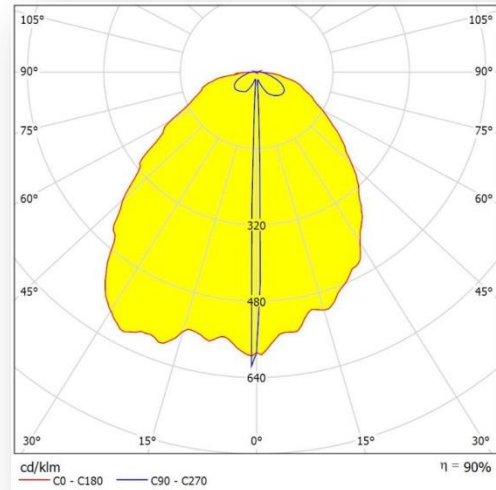
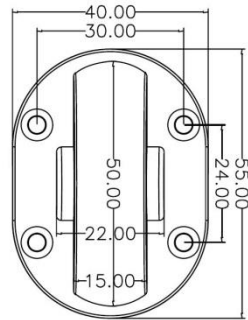
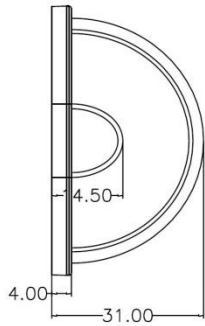


### DIMENSIONS

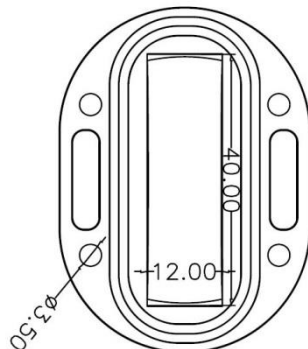
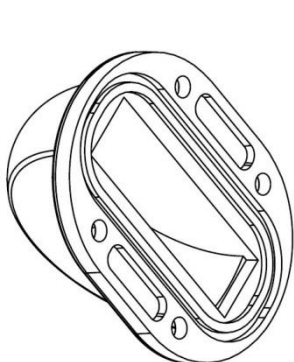


### OPTICAL INFORMATION

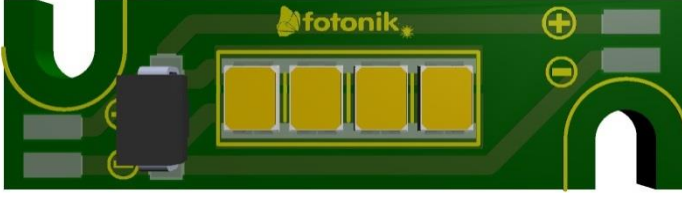
LED	2525 – 3030 – 3535 – 2835 - 5050
Beam Angle(FWHM)	3*180°



-Light Distribution Curve



## LED MODULE LAYOUT



\*LED MODULE ORDER CODE: FLS-ODL-LLM-036010-13SF-004-840-CC

## FIELDS OF APPLICATION

## LED MODULE INFORMATION

LED Type	2835 - 3030
LED Quantity	4
Module Operating Voltage (V)	6.4V (Max)
Module Operating Current (mA)	700mA (Max)
Module Power (W)	4.2
Electrical Information of PCB	4 Parallel, 1 Series
Dimension (mm)	36 x 10



## ATTENTION

- Storage: Do not store in dusty place, or expose under corrosive environment.
- Contact: Do not touch the lens surface with bare-hand. Please use gloves to touch the lenses.
- Cleaning: Clean lenses only if necessary. Use only mild soap, water and soft cloth. Do not use any commercial cleaning solvents
- The temperature of the lens in the working environment is controlled at -40°C ~ +120°C.
- Storage environment requirements, temperature: 0°C ~ 40°C humidity:30% ~ 95%.
- Before use the lens, don't open the package to avoid dust pollution.
- Avoid direct sunlight to avoid aging, discoloration, fission and other adverse effects.
- Do not use acidic or alkaline solvents to touch the product to avoid chemical reactions.

## ORDERING INFORMATION

Order Code	FLS-PC-D0055004031-SBA03180
Qty in Small Box/MPQ	24
Small Box Size (mm)	125 x 125 x 130
Small Box Weight (kg)	0.438
Qty in Box	400
Box Size (mm)	400 x 400 x 290
Box Weight (kg)	7.3

